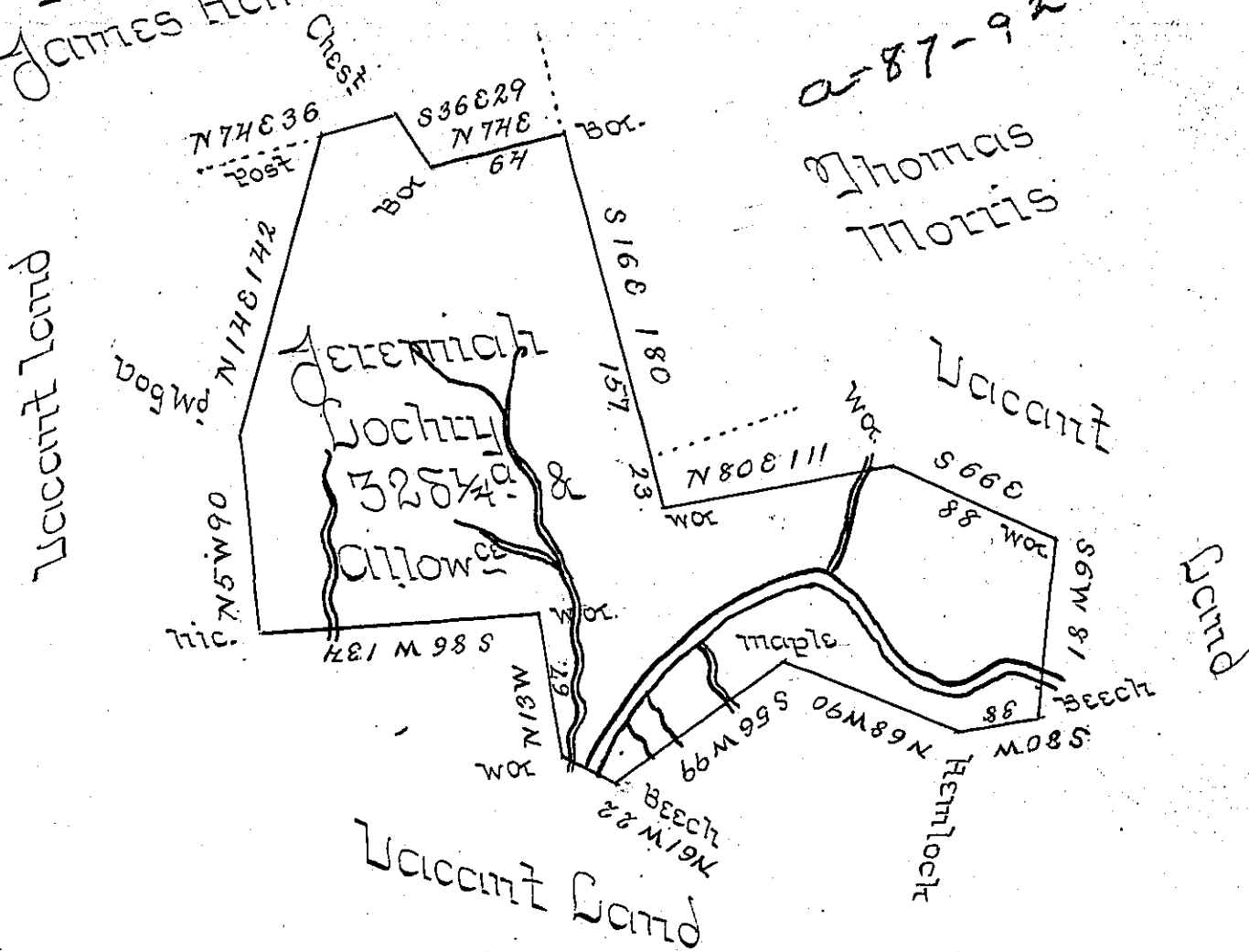


Thomas Duncan &  
James Hamilton

a-87-92

Thomas  
Morris



Surveyd to Jeremiah Lochry on the 5<sup>th</sup> Day of July  
1785 Including his Improvement the above Described  
Tract of Three hundred and twenty eight acres and one  
fourth of an acre and Allowance of Six Per Cent Situate  
on Two Lick Creek in Westmoreland County by Warrant  
of the 15<sup>th</sup> Day of June 1785 - Joshua Elder D.S.

NB the Warrant by which this was Surveyd was  
intended for land on the South Branch of Crooked  
Creek & on the Poelin path but had been Surveyd by  
Earlier Warrants

Joshua Elder D.S.

John Lukens Esq. S. Genl.

IN TESTIMONY that the above is a copy of the original remaining on file in  
the Department of Internal Affairs of Pennsylvania, made  
conformably to an Act of Assembly approved the 16th day of  
February, 1833, I have hereunto set my Hand and caused  
the Seal of said Department to be affixed at Harrisburg,  
this eleventh day of October 1905.

*Leach R. Brown*  
Secretary of Internal Affairs.